



# Net zero waste and net zero emissions

**Blaise Porter**  
Director, Group Corporate Sustainability & Responsibility





An aerial photograph of a dense green forest. A paved road forms a circular loop in the center of the image. The text "Create a world without waste to preserve our planet" is overlaid in white, bold, sans-serif font across the center of the road loop.

**Create a world without waste  
to preserve our planet**







260+

FACILITIES OPERATING IN 15 COUNTRIES\*



3,880+

EMPLOYEES



104

YEARS OF RECYCLING EXPERIENCE



\$5.9bn

SALES REVENUE IN 2021



	%
Other	42.1
United States	20.8
Turkey	16.5
Australia	7.9
China	6.7
Bangladesh	5.9

No single customer contributed 10 percent or more to the Group revenue for all the periods presented.

# Our Sustainable Business Model

## Metal Recycling

Buys, processes and sells ferrous and non-ferrous recycled metals



## Technology Lifecycle Services

Provides solutions to extend the life of data centre and corporate IT equipment by recognising value in end-of-life electronic assets, components and materials in a data-secure and environmentally sustainable way



## Resource Renewal

Plans in place to transform the residue material following metals recycling – auto shredder residue (ASR), which currently is landfilled – into useful products for society



## Municipal Recycling

Leads urban recycling in New York City and manages a portion of the curbside recycling program for Chicago – two of the largest urban areas in the United States



## Sims Energy

Sims owns 50% of LMS Energy, Australia's market leader in landfill biogas-to-energy and solar renewable energy. We bring this knowledge to Sims Energy, a wholly owned business operating in Florida (acquired in 2020)

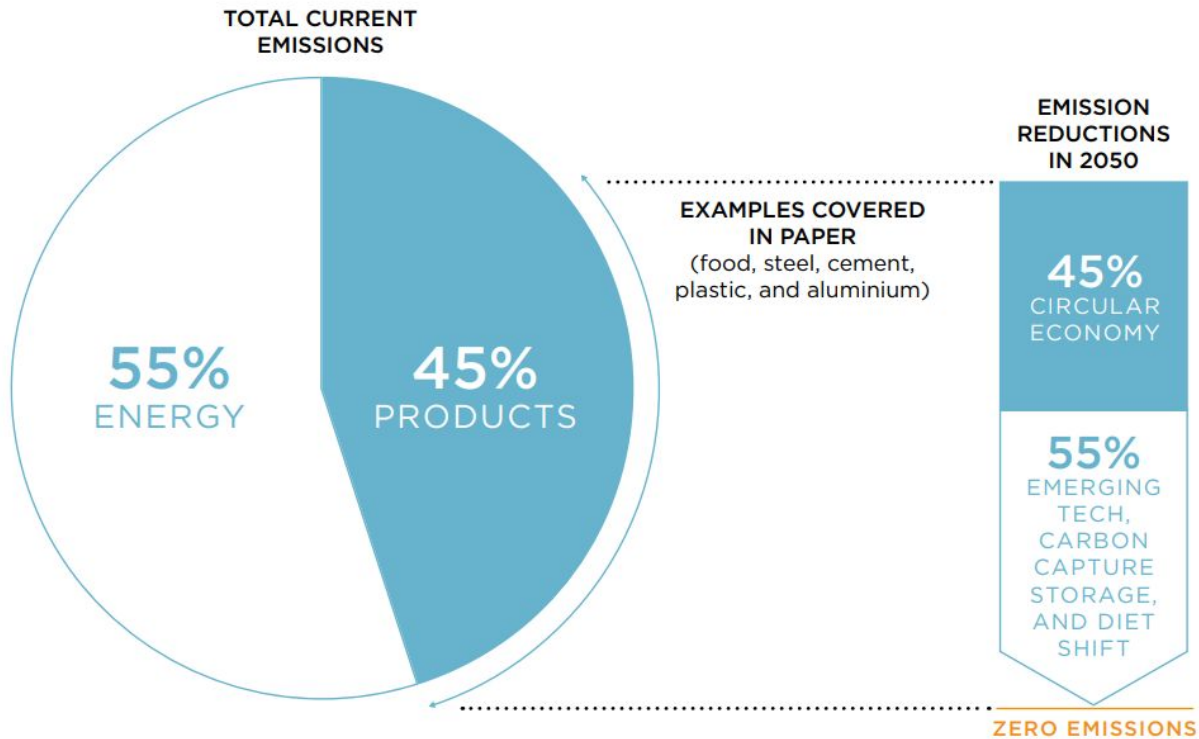


Sims Limited provides solutions that solve multi-decade challenges related to decarbonisation and the circular economy



# Circularity is key to decarbonisation

## COMPLETING THE PICTURE: TACKLING THE OVERLOOKED EMISSIONS



Moving to a circular economy in Australia could generate **\$1,860 billion** in direct economic benefits over twenty years and save **165 million tonnes of CO<sub>2</sub>** per year by 2040<sup>2</sup>



# Decarbonisation of the Metal Industry

Using recycled metal is vital to reducing carbon emissions

**7%** of global greenhouse emissions are produced by the global steel industry<sup>1</sup>

Steel produced from EAF emits **83%** less CO<sub>2</sub>/tonne compared to BF-BOF<sup>2</sup>

An electric arc furnace can be charged with **100%** discarded steel (scrap metal). A basic oxygen furnace can be charged with as much as **30%** scrap<sup>3</sup>

Recycling aluminium saves **97%** of the green house gas emissions produced during the primary production process<sup>4</sup>

Recycling copper requires **80%** to **90%** less energy than primary production<sup>5</sup>



Source:

<sup>1</sup> World Steel Association

<sup>2</sup> Responsiblesteel.org

<sup>3</sup> World Steel Association

<sup>4</sup> Alupro

<sup>5</sup> International Copper Association







**That's what we do....**

**How do we do it?**



# Integrated Approach to Business Performance

Our corporate growth strategy is embedded into our sustainability strategy

## Trends

Increased environmental concerns and more stringent environmental controls

Global push for high quality metals

Growing demand for recycled copper and aluminum

Increased focus on waste management

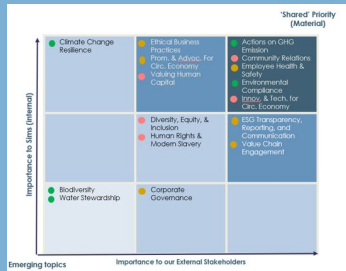
Electrification and energy transition to drive copper and aluminium prices

Increased demand for recycled metal

Increased demand for cloud services

## Materiality

- Actions on GHG Emissions
- Community Relations
- Employee Health & Safety
- Environmental Compliance
- Innovation & Technology for Circular Economy



## Sustainability Strategy

- Operate Responsibly
- Close the Loop
- Partner for change

## Growth Strategy

Grow core business and leverage synergies to expand into adjacent markets



Create a world without waste to preserve our planet





# Progress in FY22

Accelerated our climate action with more challenging targets

	FY20	FY21	FY22
<b>Become carbon neutral by 2030 and achieve net zero by 2050</b>			
Short term Reduce Scope 1 and 2 emissions by 23% by FY25 (market based)	149.9 kt CO2e	135.2 kt CO2e	116.6 kt CO2e <b>21% reduction</b>
Short term 100% Renewable Energy by 2025	0%	19%	<b>37%</b>
Short term SLS carbon neutral by 2025	7.1kt CO2e	6.8kt CO2e	6.9kt Co2e <b>2.5% reduction</b>
Medium term Sims Limited carbon neutral by 2030	149.9 kt CO2e	135.2 kt CO2e	116.6 kt CO2e <b>21% reduction</b>

Our targets were developed following the Science-Based Targets Initiative (SBTi) methodology to align with the goals of the Paris Agreement. Our long-term target is to be net zero by 2050.

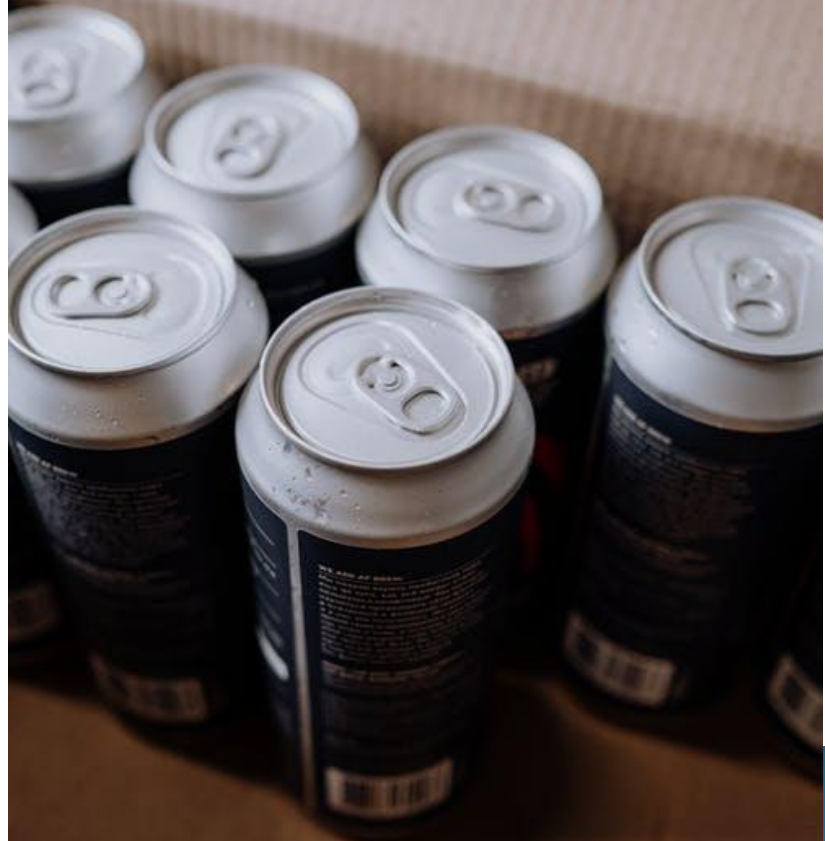


# Our Roadmap to Carbon Neutrality

Key Initiatives to decarbonisation



# Impact in the value chain





# What's the impact?



# Embodied carbon

POLICY MARISA WIKRAMANAYAKE SAT 01 OCT 22

## Melbourne Considering Zero-Carbon Building Rules

FINANCIAL REVIEW

Better building standards will take us to net zero faster



[About](#) [Ratings](#) [Training](#) [Resources](#) [Logins](#)

[Home](#) > [About](#) > [News](#) > Accelerating net zero buildings launches for NSW customers

### Accelerating net zero buildings launches for NSW customers

**Robert Harley**  
Contributor  
Oct 25, 2022 - 5:00am

Australia is moving towards a more sustainable built environment. At the leading edge of change, groups like the Living Future Institute of

[Home](#) / [News](#) / [National regulator in the works for embodied carbon](#)

## National regulator in the works for embodied carbon

Written by [Jarrod Reddie](#)

# Articulating Customer Impact



## CARBON AVOIDANCE REPORT

Generated by the SLS Sustainability Calculator

In Jan 2021 - Dec 2021  
your  
ITAD program :



**1235**  
assets  
refurbished  
for reuse

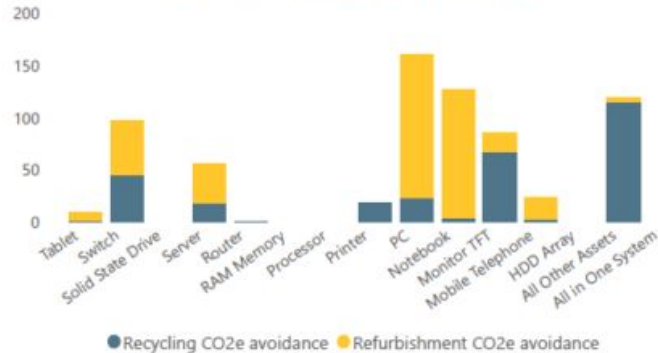


**1192**  
assets recycled  
for material  
recovery

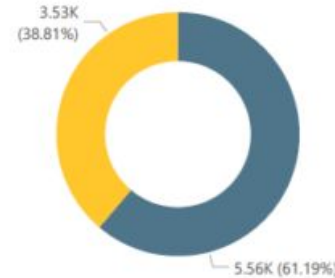


**698.27**  
tonnes of CO2  
equivalent  
emissions  
avoided

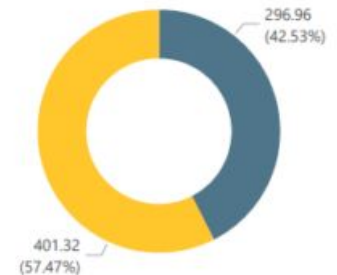
Total Carbon Avoidance By Asset Type



Total weight of IT equipment processed



Total tonnes of CO2e emissions avoided



That's the equivalent of :



**11637**  
Tree Seedlings  
grown for 10  
years



**151**  
Passenger vehicles  
driven for one year



**84**  
Household's  
energy use for  
one year



# Net zero waste



# Maximising Circularity





An aerial photograph of a dense green forest. A paved road forms a circular loop in the center of the image, with a smaller loop branching off from the bottom. The text "Create a world without waste to preserve our planet" is overlaid in white, bold, sans-serif font in the center of the circular road.

**Create a world without waste  
to preserve our planet**

